

# External Attack Surface Management

Bolster security visibility and reduce risk exposure of unknown assets

The attack surface of your organization is extensive, complex, and continuously expanding, making it challenging to keep track of your online footprint. To improve the cyber resilience of your organization, it is essential to map, analyze, and monitor your known and unknown assets and their potential vulnerabilities.

The Sweepatic External Attack Surface Management (EASM) Platform is a comprehensive solution, generating valuable insights and easy-to-remediate findings that can significantly reduce your security exposure. Our solution offers a seamless and efficient approach to IT asset risk management and serves as a robust defense mechanism, shielding your organization against malicious actors and their threats.

Our cloud-based EASM platform ensures round-the-clock surveillance of your attack surface, empowering you to detect potential security risks proactively. This ensures that any potential threats are identified in advance, and prompt action can be taken to mitigate them. With our platform, organizations have peace of mind, knowing that their cybersecurity is in good hands and enabling you to focus on what matters most.

## Asset Discovery & Inventory

Detect known and unknown assets, and shadow IT across a variety of environments not discovered by traditional vulnerability scanners based on advanced reconnaissance

## Attack Surface Scoring & Prioritization

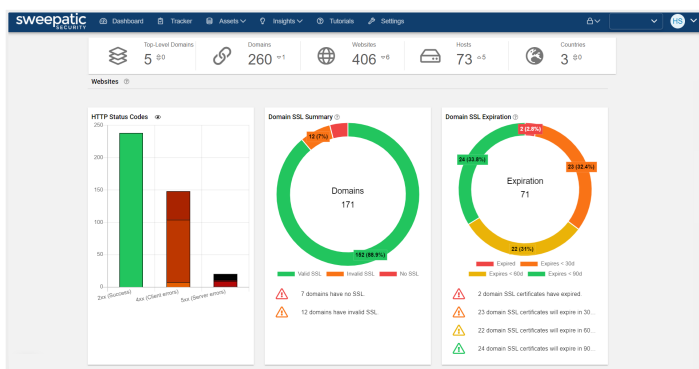
Rates the attack surface across the entire scope, on assets level and exposure to provide real time alerts and a visual overview of risk to prioritize mitigation efforts

## M&A Security Risk Assessment

Offers full visibility on the attack surface of acquired companies and subsidiaries using OSINT and publicly accessible information for due diligence

## Risk Reduction & Compliance

Facilitate brand protection and data compliance, eliminate un-managed IT assets, weak or deprecated TLS protocols and third party risk for governance



## Advanced reconnaissance



## Attack surface scoring

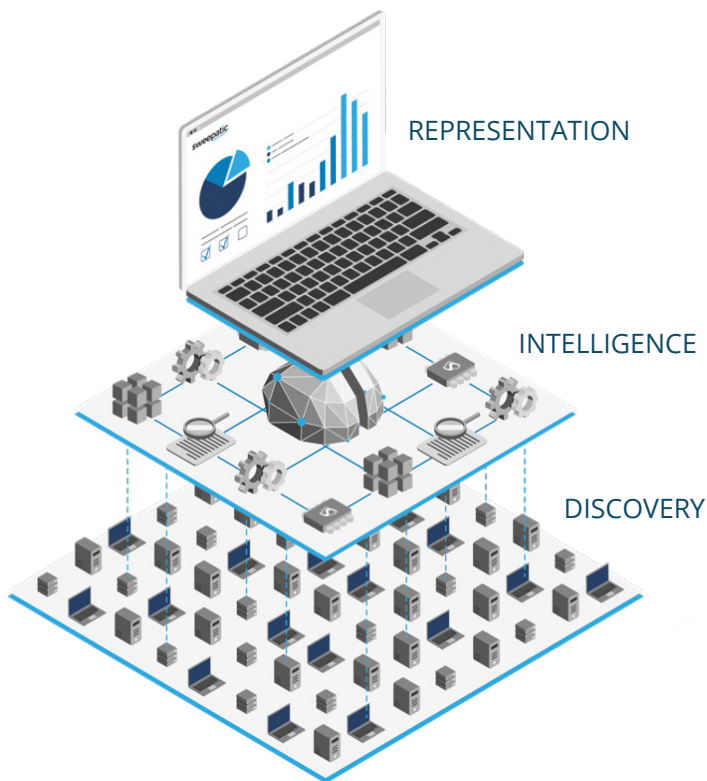
*“By running its discovery and analytics engine continuously, changes in our attack surface and possible issues are monitored and alerted 24/7. Based on the notifications, we create tickets for risks in our attack surface, follow them up and fix them.”*

Christophe Rome  
CISO, Lineas

# Map, Analyze and Monitor Your Attack Surface

Reconnaissance is the first step in the attack planning of attackers. Every organization should fully understand their digital footprint. It is important to have an up-to-date and real-life view on running hosts, how they are configured and which web applications are online.

## Features



### 24/7 monitoring

Continuous attack surface monitoring and integrated threat intelligence to identify potential threats and defend your assets against adversaries before they strike

### Comprehensive discovery

Automatically maps and analyzes your external facing assets and systems even those you don't know about

### Interactive dashboard

Overview of key elements about your attack surface allowing you to drill down to all details

### Actionable results

Accurate risk scoring highlighting critical risks for effective prioritization and mitigation

### Custom alerts and reporting

Fully configurable alerting and reporting to fit your needs

### Improved workflow

Wide range of integrations including Jira, ITSM, SOAR, CAASM to drive effective triage and remediation of biggest risks

## Complete Full Stack, Cyber Risk Management

Our cloud-native EASM platform automates the continuous mapping, analysis and monitoring of all internet-connected assets and risks. Running 24/7, the Sweepatic Platform delivers attack surface discovery and analysis via real-time notifications and an easy-to-use reporting dashboard. In this way, Sweepatic supports organizations in structuring and reducing their external attack surface – making them an unpopular target for bad actors.

[GET A DEMO](#)

### About Outpost24

The Outpost24 group is pioneering cyber risk management with vulnerability management, application security testing, threat intelligence, and access management – in a single solution. Over 2,500 customers in more than 65 countries trust Outpost24's unified solution to identify vulnerabilities, monitor external threats, and reduce the attack surface with speed and confidence.