



Vulnerability Management *made easy*

Manage Targets

Quick Start Guide

Last update:
9 February 2017

Table of Contents

1. Executive Summary.....	3
2. Manage Targets in Graphical User Interface.....	4
2.1. Manage Targets Main Page.....	4
2.2. Creating, Populating and Editing a Target Group.....	4
2.3. Inspecting and Editing Targets.....	6
2.4. Creating and Maintaining Dynamic Groups.....	10
3. Technical Support.....	11



About This Guide

1. Executive Summary

This document is meant to provide users a comprehensive overview of the Manage Targets feature for Outscan and HIAB. This document has been elaborated under the assumption that the reader has access to the Outscan/HIAB Account and Graphical User Interface.

Information in this document is subject to change without prior notice.

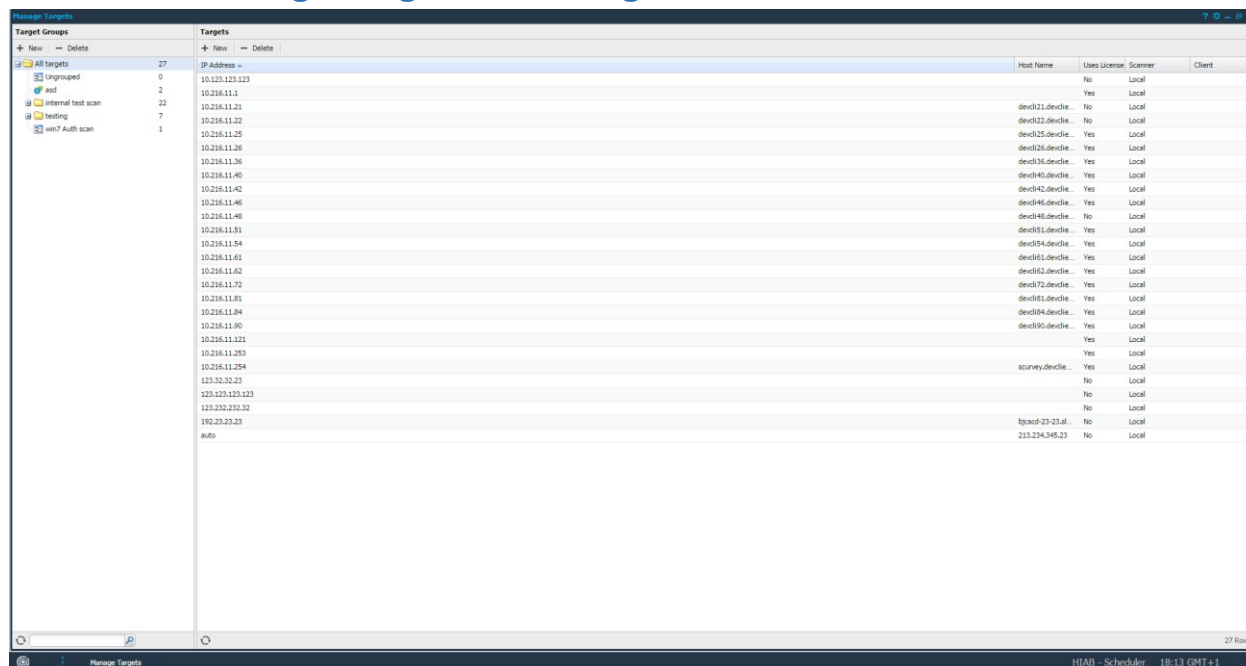
Reproduction of any part of the document without prior permission is strictly forbidden.

© Outpost24. All Rights Reserved.

2. Manage Targets in Graphical User Interface

To get into Manage Targets click on the main menu button at the bottom-left corner of your screen and select "Manage Targets" in the HIAB GUI and "Target Scanning -> Manage Targets" in the Outscan GUI.

2.1. Manage Targets Main Page



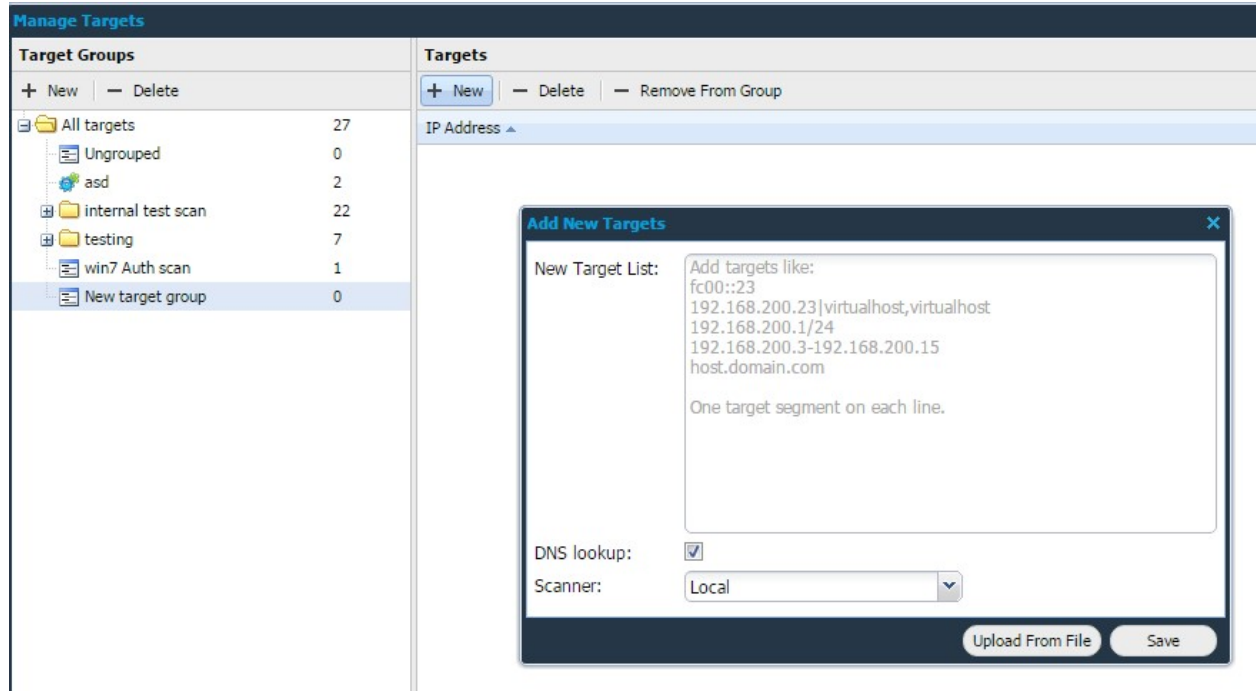
Above is the Manage Targets main page. Here you can see all your defined IP's and target groups. You are also able to add, edit and delete IP's, target groups and dynamic target groups.

2.2. Creating, Populating and Editing a Target Group

The Target Group section is used to organize your targets. A target group can contain any number of targets and subgroups. This allows you to organize your targets to make them easy to navigate. A target can exist in more than one target group. The number next to the target group name represents the number of targets present in that group.

Click on "New" in the target group field to create a new target group. You may name it as you wish. When you right click on a target group it will display all the targets defined for that target group in the target field.

To populate the selected target group click on "New" in the target section. You will then be prompted with the following window:

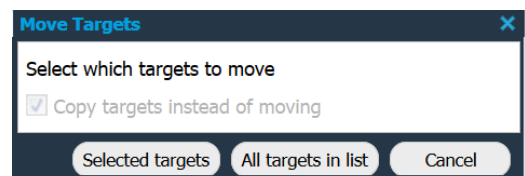


- **New Target List:** Add one or multiple targets using the help text presented to you. You cannot add private IP addresses when using Outscan.
- **DNS Lookup:** Check this if you want to perform a DNS lookup for the defined targets.
- **Scanner (HIAB only):** Set which scanner that should scan the defined targets. Default is set to local and that is referring to the machine that you are logged on to. If you have a distributed network with multiple scanners that is accepted by the scheduler. You will be able to choose which scanner to use in the dropdown menu. If you have a HIAB External license the Outscan scanner will also be available in the dropdown and should be used if public IP's are to be scanned, from the Outscan SaaS solution.
- **Upload From File:** Import a previously exported target group file or custom CSV (comma separated values) file.

It is also possible to populate a new group with already existing targets within another group. This is done by selecting the targets you wish to add to the new group, either by ctrl select or shift select multiple entries, drag them to the group and release.

When doing so you will be able to choose between:

- **Copy targets instead of moving** – Instead of moving the targets entirely from the group, copy them instead. The targets will be available in the old and the new group
- **Selected targets** – Perform the action on only the selected targets
- **All targets in list** – Perform the action on all targets in the list
- **Cancel** – Cancel the action



By double left clicking on the target group name you will have the ability to rename your target group. If you right click on any target group the following actions will be available:

- **Refresh:** You can refresh the target group list by clicking on the refresh icon in the bottom of the Target group grid.
- **Label all targets:** By right-clicking on a target group you can choose to label all your targets within the selected group. The labels are used to calculate CVSS scores. You will be prompted with a window where you can define exactly which fields that are to be updated.
- **Set target authentication:** This option allows you to define authentication on all targets currently present in the selected group.
- **Scan:** A scan can be started on a target group by right clicking on it and selecting **Scan**. From here you can set a name, mode, policy, frequency, start time, and date of the scan.
- **Perform DNS lookup:** To perform a DNS lookup on all targets in a group, right click on the group and select **Perform DNS lookup**, this performs a DNS lookup to retrieve the targets host names into the system.
- **Perform MAC lookup (HIAB Only):** To perform a MAC address lookup on all targets in a group, right click on the group and select this option.
- **Set scanner on targets (HIAB Only):** This option will set scanner for the selected targets.
- **Show Scanners (HIAB Only):** Shows a list of the defined scanners associated with the group (and its sub groups) along with the number of targets defined for each of those scanners.
- **Export target list:** This option (HTML) will display the targets within this group, and in any sub groups, in a pop up window. The second option (CSV) will generate a file which you will be prompted to save locally.
- **New dynamic group:** This option will create a new dynamic group. A dynamic group is managed by the system so that all targets that match the criteria for the group will automatically be added. Targets that no longer matches one of the criteria will be removed.
To create a group, first select a set of filters matching the criteria that the group should have, then select this option from the context menu. This feature is explained further down in this document.
- **Update dynamic group:** This will update a dynamic group with a new set of filters, disregarding the old ones.
- **Show rule for this group:** This will set the filters in the target grid to match the rule for the selected dynamic group.
- **Auditing a group:** It is possible to right click on a group and check the audit entries related to that group.

2.3. Inspecting and Editing Targets

Once you've added targets into a group it will look like this. Note that some of the columns doesn't get populated until the target has been scanned:

Target Groups		Targets														
+ New - Delete		+ New - Delete - Remove From Group														
All targets	27	IP Address	Host Name	Latest Scan Date	Last Discovery Date	Latest Scan Status	Latest Successful Scan	Next Scan Date	Platform	CD Potential	Target Distrib	Authenticati	Authentication Res	Uses License	Scanner	Client
Ungrouped	0	10.123.123.123		2015-12-02 06:43	Never	Stopped	Never	Not scheduled	Not Detected	Not defined	Not defined	None	None	No	Local	
asd	2	10.216.11.1		2015-12-02 06:44	2015-09-10 09:32	Stopped	2015-09-10 09:34	Q Not scheduled	Not Detected	Not defined	Not defined	None	None	Yes	Local	
internal test scan	22	10.216.11.21	devcli21.devclie...	2015-12-02 06:43	Never	Stopped	Never	Not scheduled	Not Detected	Not defined	Not defined	None	None	No	Local	
testing	7	10.216.11.22	devcli22.devclie...	2015-12-02 06:43	Never	Stopped	Never	Not scheduled	Not Detected	Not defined	Not defined	None	None	No	Local	
win7 Auth scan	1	10.216.11.25	devcli25.devclie...	2015-12-02 06:44	2015-09-10 09:32	Stopped	2015-09-10 09:33	Q Not scheduled	Not Detected	Not defined	Not defined	None	None	Yes	Local	
New target group	0	10.216.11.26	devcli26.devclie...	2015-12-02 06:43	2015-09-10 09:32	Stopped	2015-09-10 09:33	Q Not scheduled	Microsoft Windows IP	Not defined	Not defined	None	Failed	Q	Yes	Local
		10.216.11.36	devcli36.devclie...	2015-12-02 06:43	2015-09-10 09:32	Stopped	2015-09-10 09:33	Q Not scheduled	Microsoft Windows	Not defined	Not defined	None	Failed	Q	Yes	Local
		10.216.11.40	devcli40.devclie...	2015-12-02 06:43	2015-09-10 09:32	Stopped	2015-09-10 09:33	Q Not scheduled	Not Detected	Not defined	Not defined	None	None	Yes	Local	
		10.216.11.42	devcli42.devclie...	2015-12-02 06:44	2015-09-10 09:32	Stopped	2015-09-10 09:33	Q Not scheduled	Microsoft Windows	Not defined	Not defined	None	Failed	Q	Yes	Local
		10.216.11.46	devcli46.devclie...	2015-12-02 06:44	2015-09-10 09:32	Stopped	2015-09-10 09:33	Q Not scheduled	Unix	Not defined	Not defined	None	None	Yes	Local	
		10.216.11.48	devcli48.devclie...	2015-12-15 11:44	Never	Stopped	Never	Not scheduled	Not Detected	Not defined	Not defined	None	None	No	Local	
		10.216.11.51	devcli51.devclie...	2015-12-02 06:43	2015-09-10 09:32	Stopped	2015-09-10 09:33	Q Not scheduled	Microsoft Windows	Not defined	Not defined	None	Failed	Q	Yes	Local
		10.216.11.54	devcli54.devclie...	2015-09-10 09:32	2015-09-10 09:32	Completed	2015-09-10 09:32	Q Not scheduled	Not Detected	Not defined	Not defined	None	None	Yes	Local	
		10.216.11.61	devcli61.devclie...	2015-12-02 06:44	2015-09-10 09:32	Stopped	2015-09-10 09:33	Q Not scheduled	Unix	Not defined	Not defined	None	None	Yes	Local	
		10.216.11.62	devcli62.devclie...	2015-12-02 06:43	2015-09-10 09:32	Stopped	2015-09-10 09:32	Q Not scheduled	Apple Mac OS X	Not defined	Not defined	None	None	Yes	Local	
		10.216.11.72	devcli72.devclie...	2015-12-02 06:43	2015-09-10 09:32	Stopped	2015-09-10 09:32	Q Not scheduled	Not Detected	Not defined	Not defined	None	None	Yes	Local	
		10.216.11.81	devcli81.devclie...	2015-12-15 11:44	2015-09-10 09:32	Stopped	2015-09-10 09:33	Q Not scheduled	Unix	Not defined	Not defined	None	Failed	Q	Yes	Local
		10.216.11.84	devcli84.devclie...	2015-12-02 06:44	2015-09-10 09:32	Stopped	2015-09-10 09:33	Q Not scheduled	Microsoft Windows	Not defined	Not defined	None	Failed	Q	Yes	Local
		10.216.11.90	devcli90.devclie...	2015-12-02 06:44	2015-09-10 09:32	Stopped	2015-09-10 09:33	Q Not scheduled	Unix	Not defined	Not defined	None	None	Yes	Local	
		10.216.11.121		2015-12-02 06:43	2015-09-10 09:32	Stopped	2015-09-10 09:34	Q Not scheduled	Unix	Not defined	Not defined	None	None	Yes	Local	
		10.216.11.253		2015-12-02 06:43	2015-09-10 09:32	Stopped	2015-09-10 09:33	Q Not scheduled	Unix	Not defined	Not defined	None	None	Yes	Local	
		10.216.11.294	scurvey.devclie...	2015-12-02 06:44	2015-09-10 09:32	Stopped	2015-09-10 09:33	Q Not scheduled	Not Detected	Not defined	Not defined	None	None	Yes	Local	

To add or remove columns, hover your mouse over any column name and click the down pointing arrow. Select "Columns" and check or uncheck what columns you want the use in the GUI:

Host Name	Latest Scan Date	Last Discovery Date	Latest Scan Status
		Never	Stopped
		2015-09-10 09:32	Stopped
		Never	Stopped
devcli21.devclie...			
devcli22.devclie...			
devcli25.devclie...			
devcli26.devclie...			
devcli36.devclie...			
devcli40.devclie...			
devcli42.devclie...	2015-12-02 06:44		
devcli46.devclie...	2015-12-02 06:44		
devcli48.devclie...	2015-12-15 11:44		
devcli51.devclie...	2015-12-02 06:43		
devcli54.devclie...	2015-09-10 09:32		
devcli61.devclie...	2015-12-02 06:44		
devcli62.devclie...	2015-12-02 06:43		
devcli72.devclie...	2015-12-02 06:43		
devcli81.devclie...	2015-12-15 11:44		
devcli84.devclie...	2015-12-02 06:44		
devcli90.devclie...	2015-12-02 06:44		
	2015-12-02 06:43		
	2015-12-02 06:43		
scurvey.devclie...	2015-12-02 06:44		

- Sort Ascending
- Sort Descending
- Columns
- Filters
- Remove All Filters
- Views

- ARN
- Authentication
- Authentication Result
- Availability
- CD Potential
- Client
- Confidentiality
- Hidden URLs
- Host Name
- Instance Id
- Integrity
- IP Address
- Last Discovery Date
- Latest Scan Date
- Latest Scan Status
- Latest Successful Scan Date
- MAC Address
- NetBIOS
- Next Scan Date
- Override Scan Policy
- Platform
- Request Body Blacklist
- Scan Update Signature Available
- Scanner
- Target Distribution
- URL Blacklist
- Uses License
- Virtual Host Names

IP Address: The IP address of the target.

Host Name: The targets host name.

Platform: The detected platform of the target.

Latest Scan Date: The most recent date that a scan was run.

Latest Scan Status: Status of the most recent scan.

Last Discovery Date: The last date the IP was detected in a discovery scan.

Virtual Host Names: A list of virtual host names.

Hidden URLs: A list of hidden URLs for the webapp scanner to crawl. Hidden URLs are URLs that cannot be reached by crawling the default address.

MAC Address: The targets MAC address.

Availability: The targets availability, used for CVSS score calculation.

Integrity: The targets integrity, used for CVSS score calculation.

Confidentiality: The targets confidentiality, used for CVSS score calculation.

CD Potential: The targets collateral damage potential, used for CVSS score calculation.

Target Distribution: The targets distribution, used for CVSS score calculation.



Latest Successful Scan Date: The date when the last successful scan was executed against this target.

Next Scan Date: The next date and time when this target will be scanned.

Authentication: Flag if authentication is defined on this target.

Authentication Result: The last results of when the authentication where used.

NetBIOS: The targets NetBIOS name.

Scanner: Scans against the target will be executed by this scanner. Only visible when at least one scanner is registered.

Client: Is a self-defined attribute in which the user can create their own information columns. You can create and edit these custom columns in "Main menu -> Settings -> Account -> Attributes".

ARN: Shows the targets ARN name.

Instance ID: Shows the instance ID for AWS targets.

Override Scan Policy: Shows if the settings for the targets overrides the scan policy. This can be done by editing the target and setting specific scan settings for that target only.

Request Body Blacklist: Shows the request body blacklist for the target.

Scan Update Signature Available: Shows if there is a scan update signature available for the target.

URL Blacklist: Shows the URL Blacklist for the target.

Uses License: Shows if this targets is using your license or not.

To edit a target right click on the specific target and select "Edit". The "Maintaining Target" window will then appear:

IP Address	Host Name	Platform	Scanner
10.10.10.1	cisco-dmz.internal.example.com	cisco	Local
10.10.10.2			
10.10.10.3			
10.10.10.4			
10.10.10.5			
91.216.32.1			
91.216.32.2			
91.216.32.3			
91.216.32.4			
91.216.32.5			
91.216.32.6			
91.216.32.7			
91.216.32.8			
91.216.32.9			
91.216.32.10			
192.168.1.2			
192.168.1.3			
192.168.1.4			
192.168.1.5			
192.168.1.6			
192.168.1.7			
192.168.1.9			
192.168.1.10			
192.168.2.8			
192.168.200.10			
192.168.200.11			
192.168.200.12			
192.168.200.13			
192.168.210.1			
192.168.210.2			
192.168.210.3			
192.168.210.4	Dc2-win2k12.internal.example.com	Windows	Local
192.168.210.5	Dc2-win2k12.internal.example.com	Windows	Local
192.168.210.6	Dc2-win2k12.internal.example.com	Windows	Local



In the top of the window you will find the general information about the target that you are editing. Note that for example the field MAC-Address doesn't get populated until the target has been scanned.

Following tabs are present in the Maintaining Target window:

- **WEB Settings**
 - **Virtual Hosts:** If there are one or multiple virtual hosts on the target you can add them here. Note: up to 10 virtual hosts can be defined per target.
 - **Hidden URLs:** Add URLs that cannot be crawled from the default site. URLs that are added here will be crawl separately.
 - **URL Blacklist:** Add URLs that you would like the scanner NOT to scan. Most common blacklisted URL is the site's logout URL to prevent the scanner from logging itself out.
 - **Request Body Blacklist:** Add body blacklists.
- **CVSS Score**

Use the dropdowns in this tab to evaluate the impact of a security breach on the target. Grade the availability, confidentiality, integrity along with the Collateral Damage Potential and this will be taken into account when the CVSS score is being set. This is done in order to personalize the CVSS scores as some targets are more valuable than other.
- **Attributes**

This tab only appear if the user has one or more custom attributes configured to be shown in "Targets". This is to add the ability to add additional information about the target.
- **Override Scan Policy**

This tab will give you the ability to set what vulnerabilities will be searched/not searched for on this target. This will override the scan policy used for the scan of this target.
- **Authentication**

Use this tab to fill in information that will help the scanner to authenticate against the target every time it gets scanned. Authentication will allow the scanner to access registry keys and perform sudo-commands which greatly increases the scan accuracy.
- **Databases**

Use this tab to fill in information that will help the scanner to authenticate against a database on the target. This is only used when running a compliance scan and if a SQL database has been defined.

When right clicking on any target in the target section you will have following options along with above named "Edit":

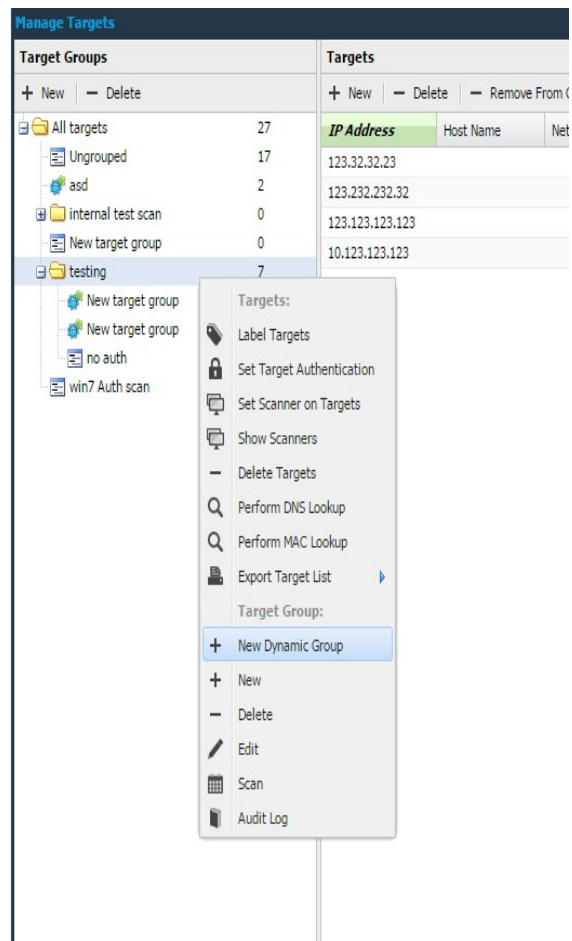
- **New:** Clicking New will open the **Add New Targets** window. The newly created targets will belong to the currently selected target group.
- **Show groups:** Will show all target groups in which this target has been added to.
- **Remove from group:** Clicking on remove from group while one or more targets have been selected will remove them from the group.
- **Delete:** Clicking delete while having any targets selected will delete them from the system. You can select multiple targets for deletion by holding shift while selecting the targets. Reports for the selected targets will however not be deleted.
- **Edit:** To edit a target right-click on it and select **Edit**. This allows you to set the **Host Name**, **MAC Address**, label the systems importance which is used to calculate CVSS scores, and set **Virtual host**, **hidden URL's**. It also includes settings to set target to **override scan policy**.

- **Perform DNS lookup:** To perform a DNS lookup on an individual target, right-click on the target and select **Perform DNS lookup**. This will try to determine the targets host name and store that information in the system.
- **Perform MAC Lookup (HIAB only):** Performs a MAC lookup on the selected target.
- **Audit log:** To see the changes made to a certain entry, right click on it and select **Audit log**. This will show a dialog with all the changes made to the object that were made by you or one of the users that you administrate.
- **Export:** To export data from the grid, right click on any entry and select either to export it as HTML or CSV (comma separated values) in the sub menu. This will give you either a HTML page or a CSV file with data that you can save or copy data from.
- **Label Targets:** By right-clicking on a target you can choose to update specific labels or attributes on the target(s).
- **Show Scan Results:** Shows latest scan results for this target in the Reporting Tools.

2.4. Creating and Maintaining Dynamic Groups

Adding a filter on for example Geographic Location: "Europe" will make sure that all targets that have geographic location set to Europe will be shown in the GUI. Once any filter has been added to any column, right click on the target group that the filter is active in and select "New Dynamic Group". All the targets that were displayed in the GUI when the filters are used will then be added in a new dynamic group. In the picture to the right I've filtered all targets with the IP "123" in it. When I click on "New Dynamic Group" these 4 target will be added in a new dynamic group. Note that you cannot create dynamic groups from the target groups "All Targets" or "Ungrouped". Any number of filters can be applied when creating the group. Adding and removing targets to a rule dynamic is not allowed and it may neither be used to save targets in after a discovery scan. Dynamic groups can only be updated by a user with access to all targets and they are marked with a special icon.

These dynamic groups can be edited and deployed the same way as regular target groups.



Target Groups	Count	Targets
All targets	27	123.32.32.23
Ungrouped	17	123.232.232.32
asd	2	123.123.123.123
internal test scan	0	10.123.123.123
New target group	0	
testing	7	
New target group		
New target group		
no auth		
win7 Auth scan		



3. Technical Support

Contact our 24/7 support team by email or telephone:

Email support@outpost24.com

Tel (from the UK): +44 20 7193 8410

Tel (from the US): +1 (800) 69 13 150

Tel (from Spain): +34 91 188 08 15

Tel (from Mexico): +52 55 8421 4503

Tel (from Hong Kong): +852 8175 8310

Tel (from Malaysia): +603 2035 5931

Tel (from Singapore): +65 3151 8310

Tel (from Thailand): +662 642 7258

Tel (all other countries): +46 455 612 310